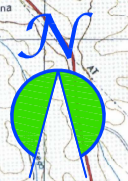
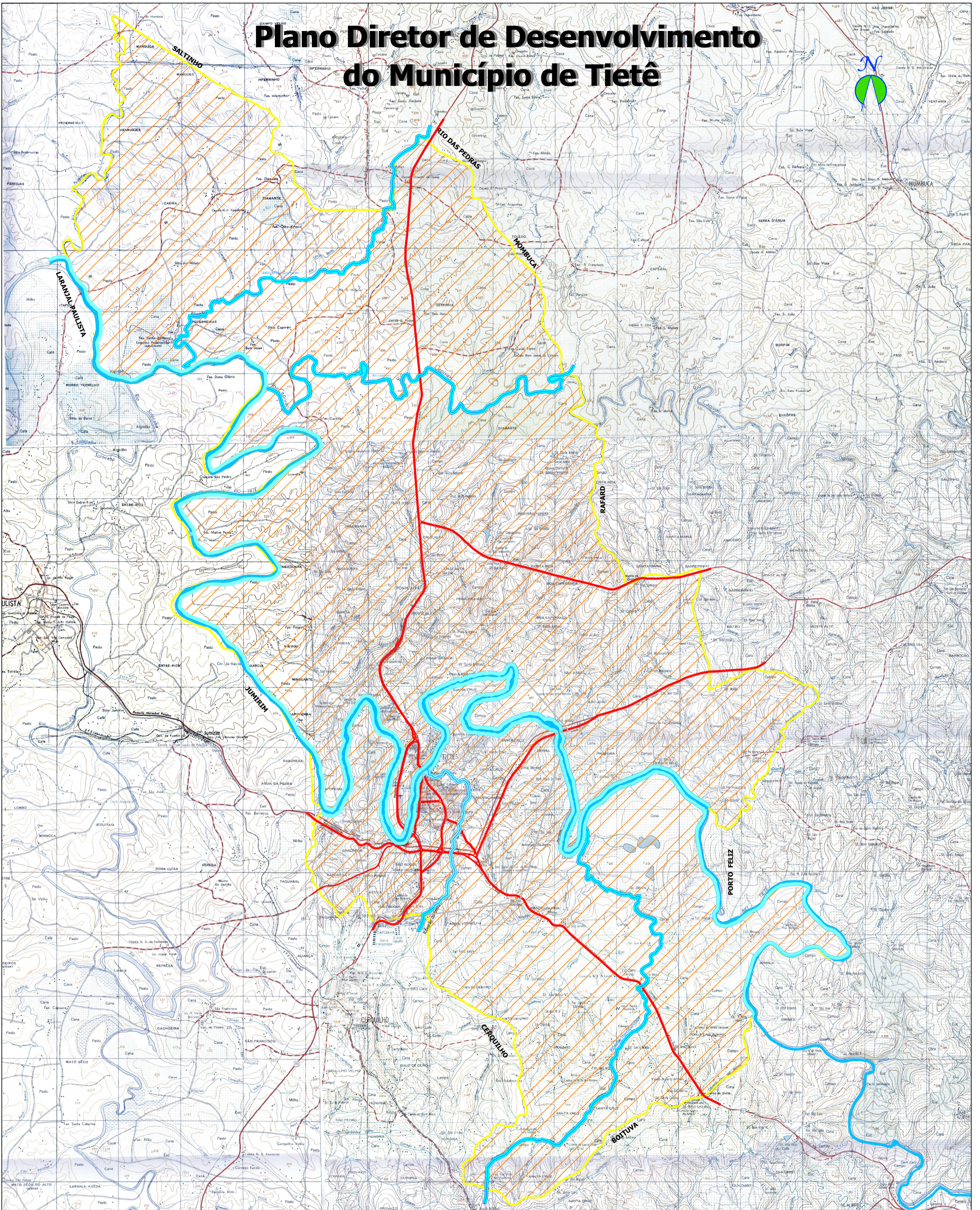
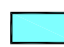







# Plano Diretor de Desenvolvimento do Município de Tietê



## LEGENDA

-  Áreas Destinadas ao Exercício do Direito de Preempção
-  ZEIA 1-Zona Especial de Interesse Ambiental(Rio Tietê)
-  ZEIA 2-Zona Especial de Interesse Ambiental(Rios: Capivari/Capivari Mirim/Ribeirão da Serra/Mandiçununga)
-  ZEIA 3-Zona Especial de Interesse Ambiental(Micro Bacia do Córrego Água Branca)
-  Principais afluentes
-  Rio Tietê
-  Rodovias
-  Limite do Perímetro Urbano
-  Limite do Município de Tietê



PREFEITURA DO MUNICÍPIO DE TIETÊ

Março/2006

Propostas do Plano Diretor:

Mapa

**ÁREAS DESTINADAS AO EXERCÍCIO DO DIREITO DE PREEMPÇÃO**

**10**

Escala Gráfica

