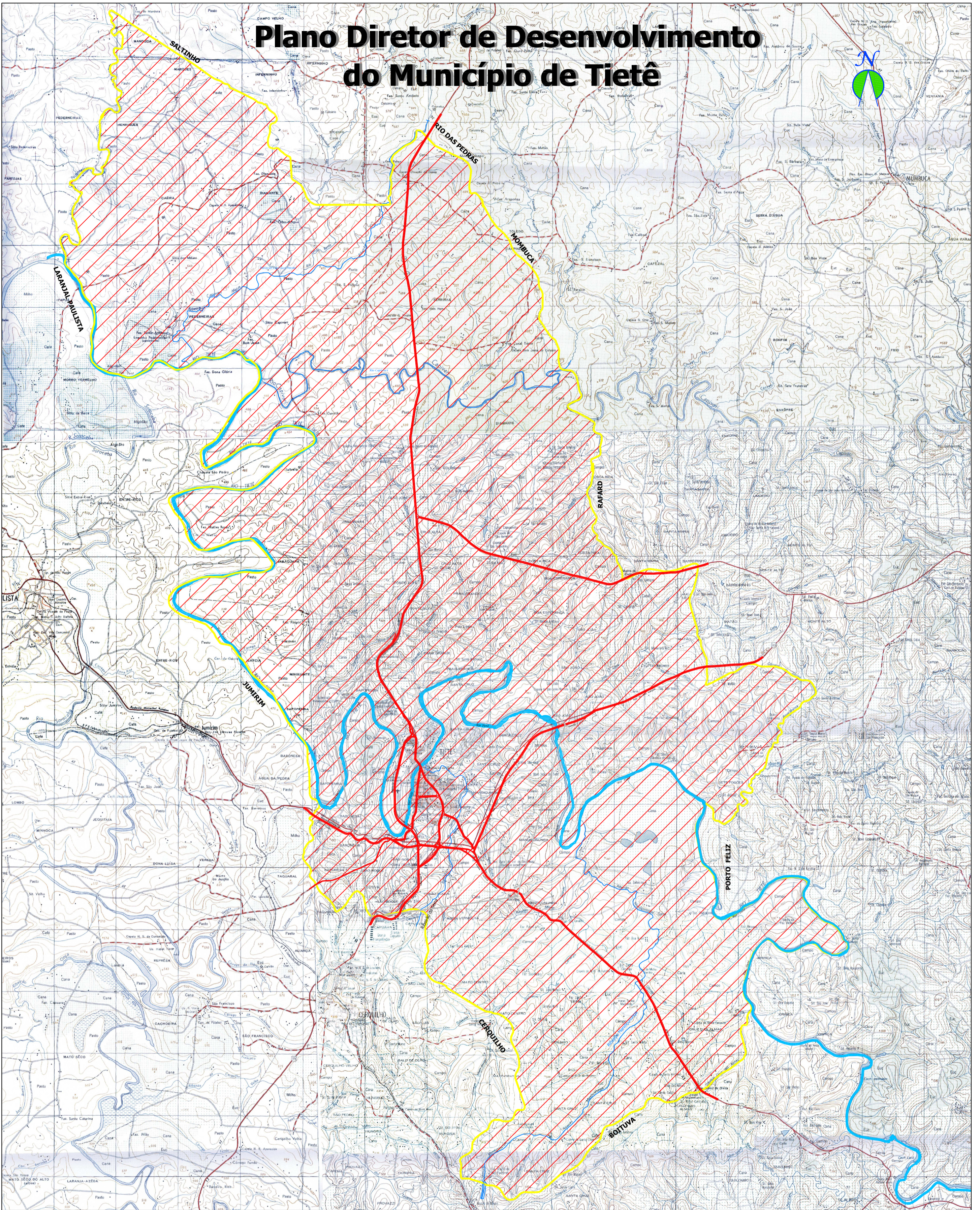
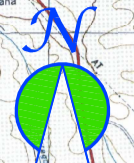








Plano Diretor de Desenvolvimento do Município de Tietê



LEGENDA

-  Áreas Destinadas à Regularização Fundiária
-  Principais afluentes
-  Rio Tietê
-  Rodovias
-  Limite do Perímetro Urbano
-  Limite do Município de Tietê



PREFEITURA DO MUNICÍPIO DE TIETÊ

Março/2006

Propostas do Plano Diretor:

Mapa

ÁREAS DESTINADAS À REGULARIZAÇÃO FUNDIÁRIA

12

Escala Gráfica

