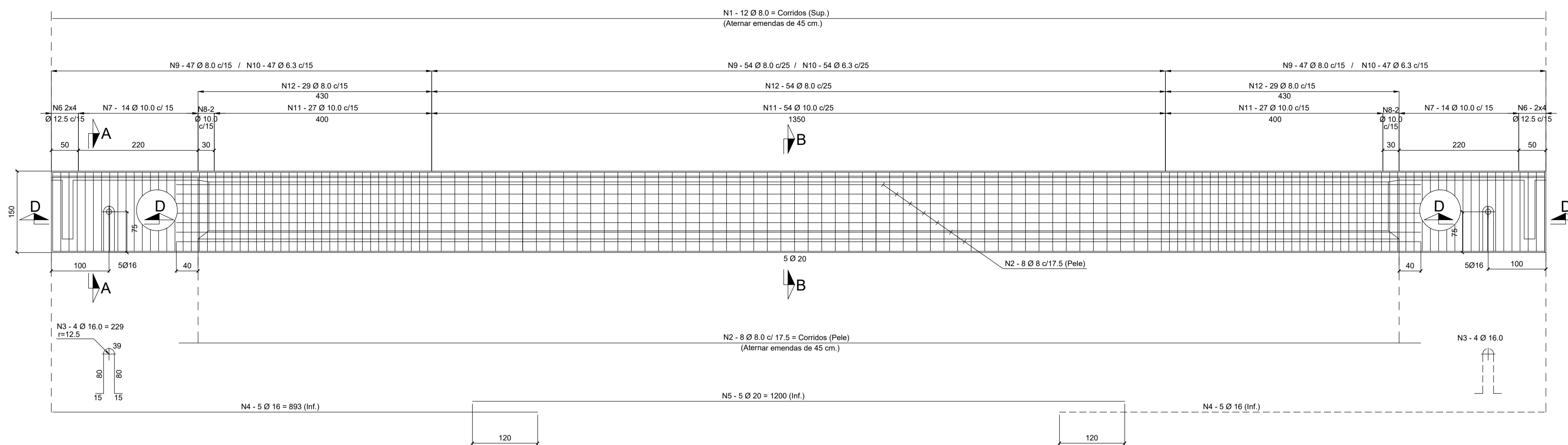


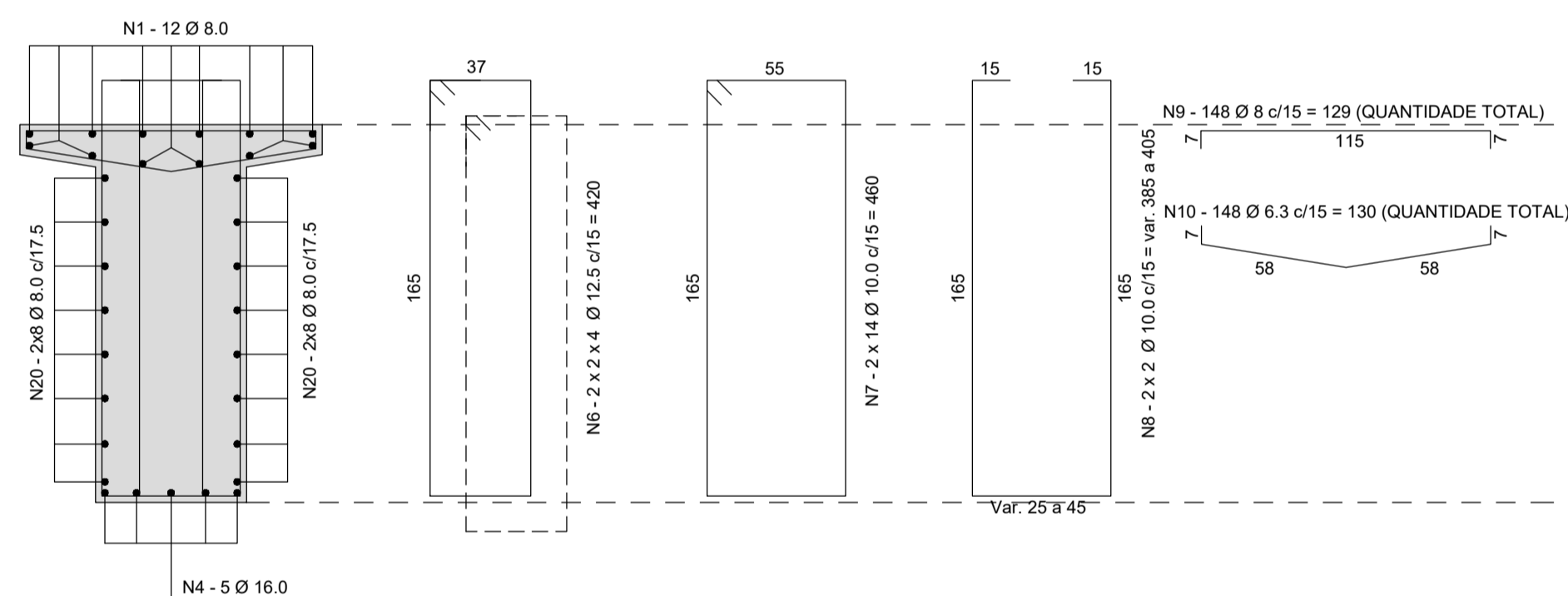
### ARMAÇÃO DA VIGA LONGARINA - ELEVÇÃO (4x)

ESC. 1:50

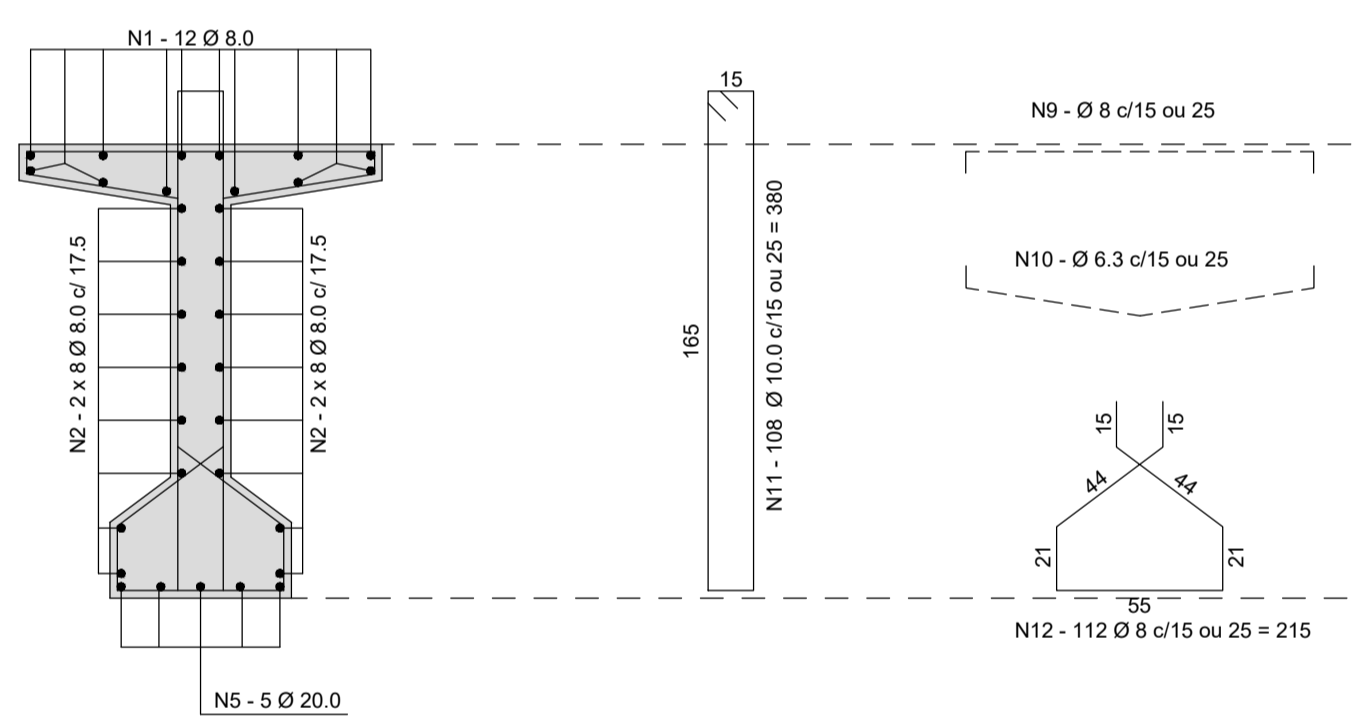


#### CORTE A - A (ENGROSSAMENTO)

ESC. 1:25

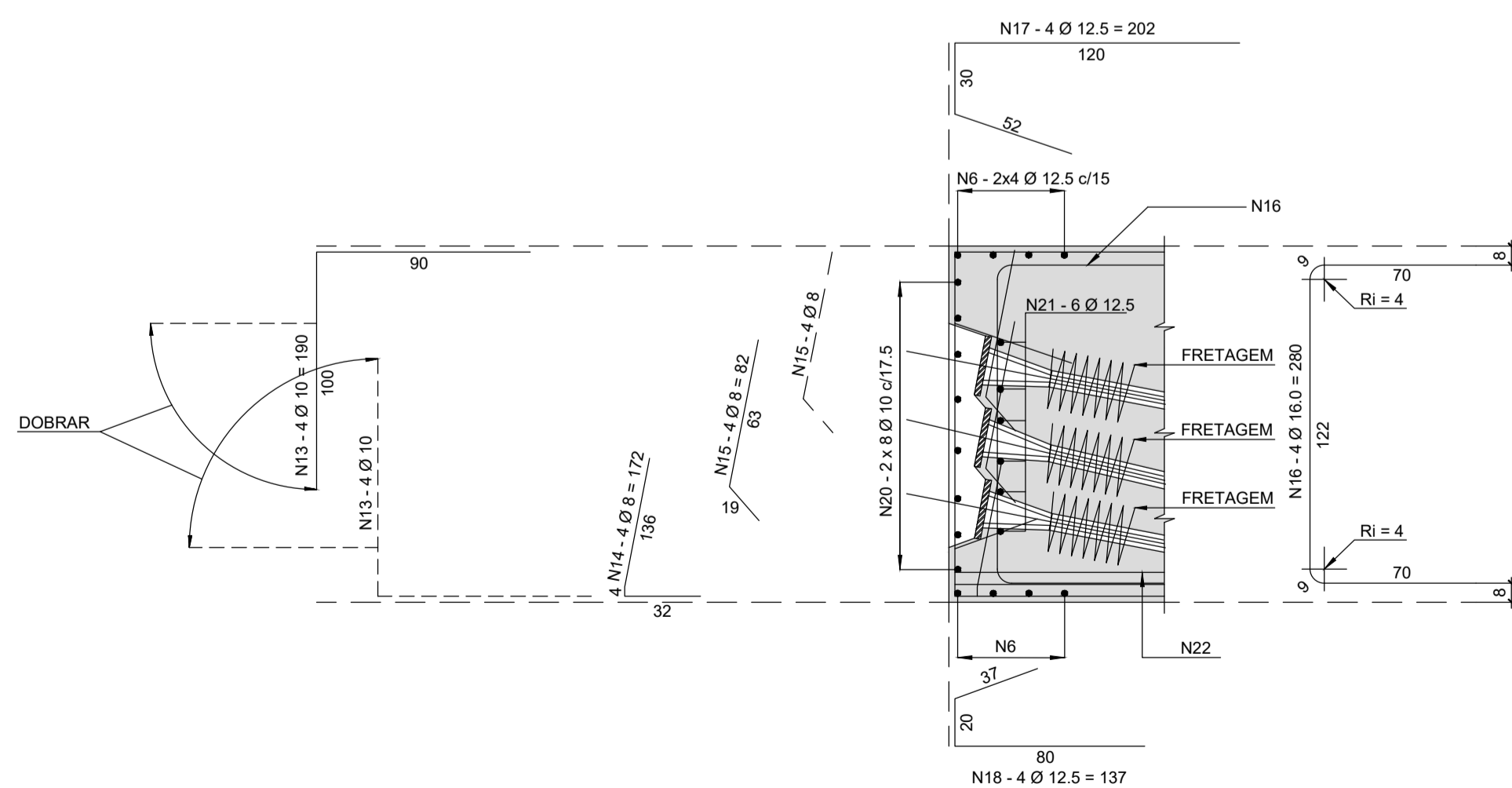


#### CORTE B - B (VÃO)



#### CORTE C - C (ELEVÇÃO DO FINAL DA VIGA) (2x)

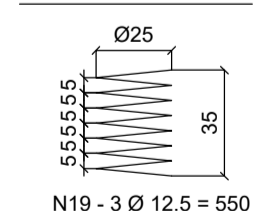
ESC. 1:25



#### FRETAGEM DAS VIGAS (2x4)

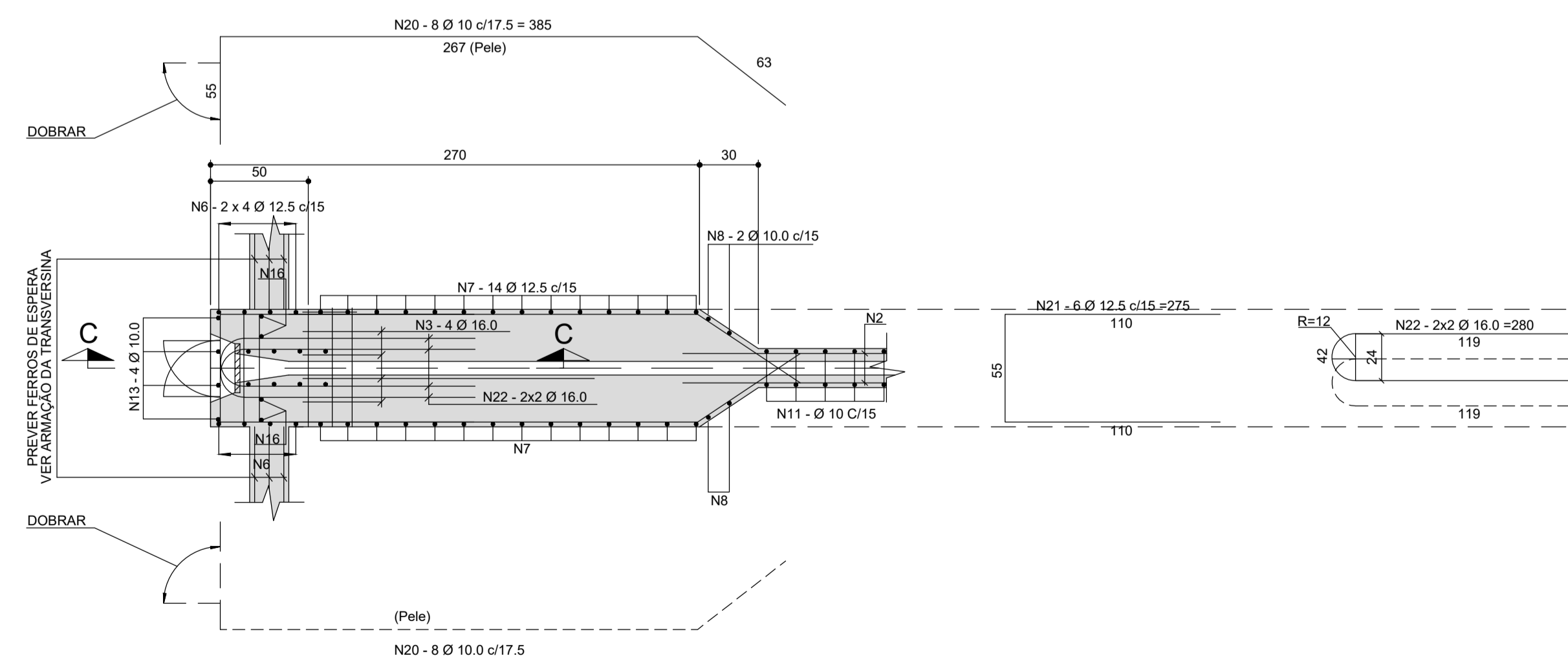
ESC. 1:25

#### CIRCULAR



#### CORTE D - D (PLANTA DO ENGROSSAMENTO) (2x)

ESC. 1:25



#### LISTA DE FERROS P/ 1 VIGA

N	Ø	Quant.	Comprimentos unit	total
1	8,0	12	Corr.	340
2	8,0	16	Corr.	380
3	16,0	8	229	18
4	16,0	10	893	89
5	20,0	5	1200	60
6	12,5	16	420	67
7	10,0	28	460	128
8	10,0	4	Var.	15
9	8,0	148	129	190
10	6,3	148	130	192
11	10,0	108	380	410
12	8,0	112	215	240
13	10,0	16	190	30
14	8,0	8	172	13
15	8,0	16	82	13
16	16,0	8	280	22
17	12,5	8	202	16
18	12,5	8	137	10
19	12,5	24	550	132
20	10,0	32	385	123
21	12,5	12	275	33
22	16,0	8	280	22

#### RESUMO CA-50 P/ 1 VIGA

Ø	COMPR (m)	PESO (kg)
6,3	182,40	43
8,0	1179,60	472
10,0	708,60	446
12,5	259,32	259
16,0	152,37	244
20,0	60,00	150
25,0	-----	-----
<b>Total</b>		<b>1619</b>

#### RESUMO CA-50 P/ 4 VIGAS

Ø	COMPR (m)	PESO (kg)
6,3	769,60	192
8,0	4718,40	1887
10,0	2834,40	1786
12,5	1037,28	1037
16,0	606,48	975
20,0	240,00	600
25,0	-----	-----
<b>Total</b>		<b>6478</b>

QUANTIDADE AÇO PREVIS' PARA LONGARINA A MAIS: AÇO: 1.619,50 KG

#### Notas:

- 1 - Concreto da Superestrutura fck > 35 MP
- 2 - Cobrimento das Armaduras = 2,5cm.
- 3 - Medidas em centímetros.
- 4 - Ver notas gerais na FL. 02
- 5 - Prever uma longarina a mais

n°	Data	Revisão

**fares & associado**  
 r. catalão, 389 - brolhin - são paulo - sp  
 tel: 5506.0655 - fares@faresassociados.com.br

Projeto: PROJETO EXECUTIVO ESTRUTURAL DA PONTE JOSE CIRIONI SA  
 Cliente: P.M. TIETÉ  
 Local: BAIRRO MANDISSUNUNGA - TIETÉ - SP  
 Assunto: Escala: Indi

**ARMAÇÃO DAS VIGAS LONGARINAS**

Proj: Cristian Assali  
 Des: Rodrigo Allan  
 Verif: RODOLFO  
 Aprov.  
 Proj: n°

07